



EUFORE

European Forest Research and Innovation Ecosystem



Building a sustainable, trans-national and co-creative environment to define, implement, and evaluate an R&I agenda and roadmap for the entire forest-based value chains in Europe

What is EUFORE?

The European Forest Research and Innovation Ecosystem (EUFORE) is a Horizon Europe project funded by the European Union, running from November 2022 to October 2026.

The overarching ambition of EUFORE is to greatly improve the sector's research and innovation funding and governance structure.

The project builds a sustainable, transnational, co-creative environment to define, implement and evaluate a research and innovation (R&I) agenda and roadmap for the forest-based value chains in Europe.

EUFORE brings together the entire value chain of forests and the forest-based sector in Europe, including both traditional and new value chains.

Wood products

eg Wood construction, furniture, paper, packaging, biorefinery and new materials

Wild forest products

eg Fruits, mushrooms, berries, cork, game

Regulating ecosystem services

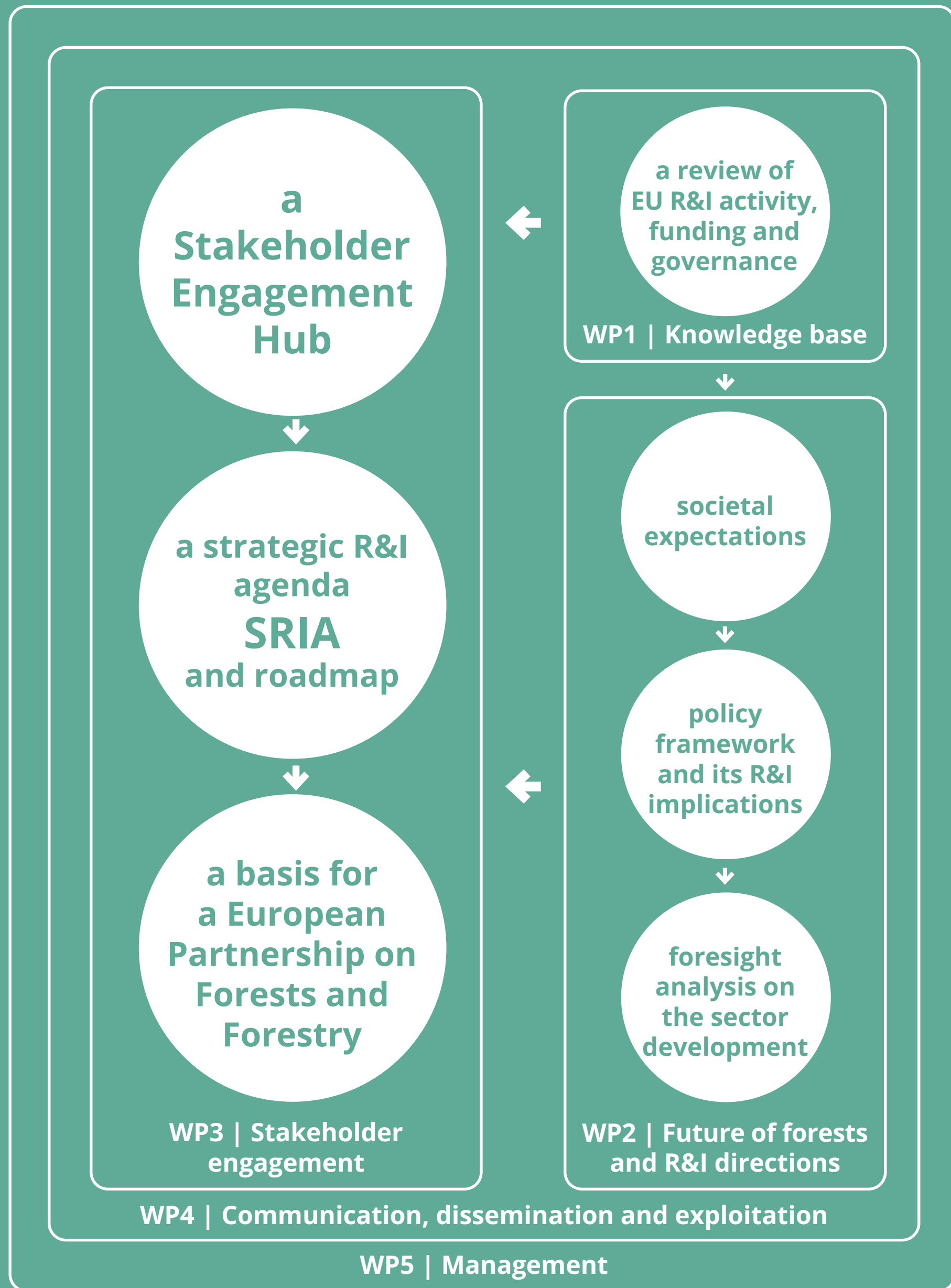
eg Water and climate regulation, habitat creation

Cultural ecosystem services

eg Health, tourism, sports, culture

info@eufore.eu | eufore.eu





What are EUFORE's main outputs?

EUFORE develops a **strategic R&I agenda for forests and the forest-based sector (SRIA)**, along with accompanying implementation measures and stakeholder commitments.

These will be co-designed with relevant key actors through the set-up of a **Stakeholder Engagement Hub**. The Hub is an inclusive forum for deliberation and decision-making, connecting European, regional and national levels, with strong ties to other sectors, and with representation across all of the sector's strata.

EUFORE's work creates a solid collaborative basis for a **European Partnership on Forests and Forestry**.

Reaching informed decisions

EUFORE will provide and develop the relevant information needed to enable the Stakeholder Engagement Hub to reach informed decisions.

This entails:

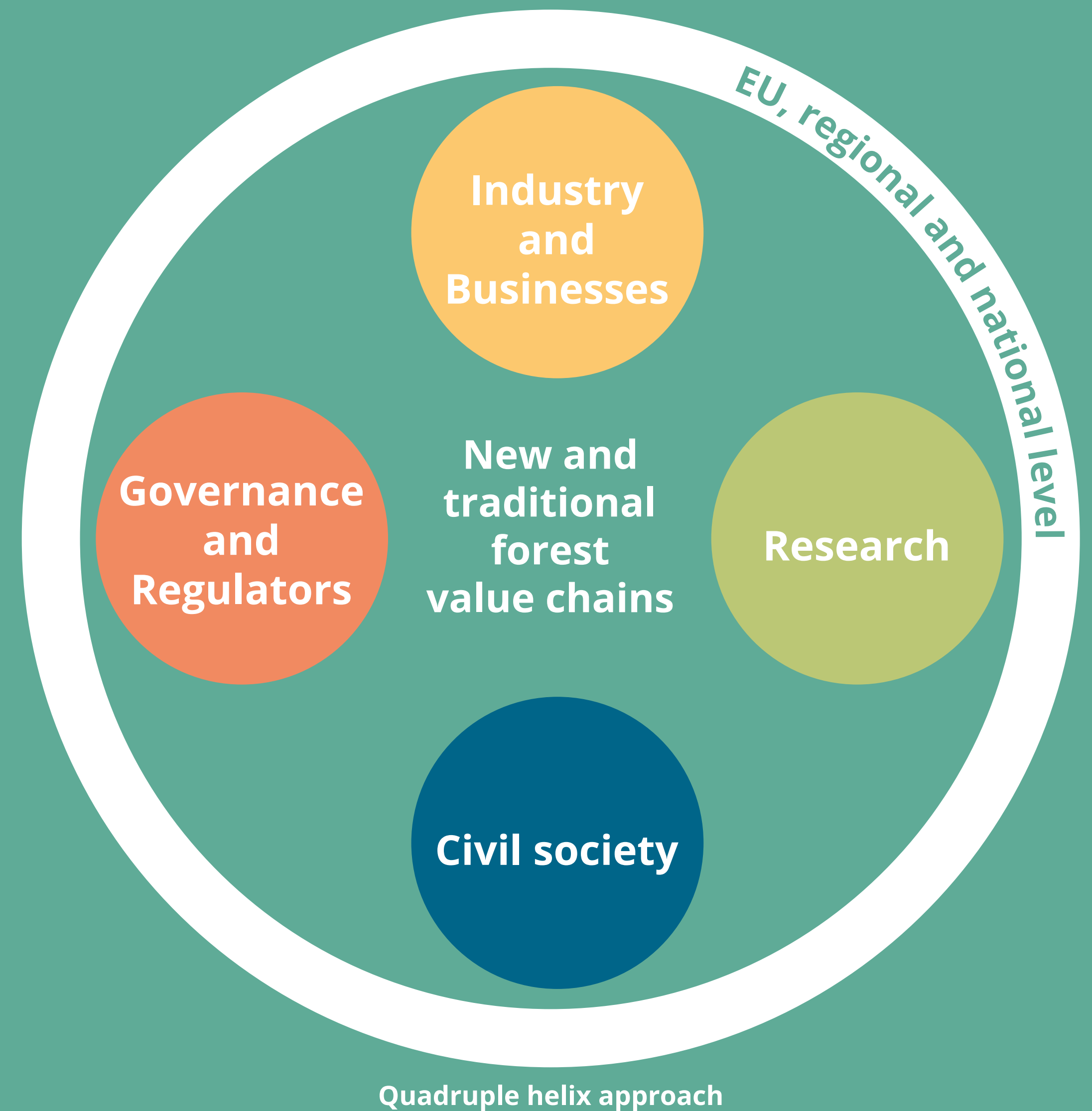
- a review of European R&I activity, funding and governance in the sector
- information on societal expectations towards the sector
- analysis of the sector's policy framework and its R&I implications
- foresight analysis on how the sector might develop, and what the future supply of and demand for its ecosystem services and products may be.

How are relevant stakeholders identified?

A multi-actor approach will be implemented within the framework of the Stakeholder Engagement Hub.

EUFORE brings together stakeholders from both traditional and new value chains, following the quadruple helix approach, and integrates national, regional and European levels. This approach considers research, governance, regulators, industry and businesses, while also integrating civil society.

This innovative approach, in comparison with the triple helix, allows citizens to contribute to building new innovation paths to promote socio-economic growth.



Quadruple helix approach



European Partnership on Forestry

EUFORE's work creates a solid collaborative basis for a European Partnership on Forestry. **European Partnerships** are **Horizon Europe initiatives which bring together the European Commission and public and/or private partners** to support the development and implementation of an R&I programme.

EUFORE supports the **Standing Committee on Agricultural Research Strategic Working Group on Forests and Forestry Research and Innovation —SCAR FOREST**—which is developing a European Partnership on Forests and Forestry.

SCAR was established in 1974 and contains representatives of more than 35 countries (EU Member States and Observers). It is focused on R&I priorities

to address Europe's challenges in agriculture, fisheries, food systems, forestry, and the wider bioeconomy. SCAR and its dedicated Working Groups are a key platform for co-creating five Horizon Europe Partnerships.

A Strategic Research and Innovation Agenda —SRIA— is a precondition to launch a Partnership on Forests and Forestry and needs to be agreed with the European Commission. Hence, the R&I agenda setting requires an extensive stakeholder consultation process. **EUFORE supports SCAR FOREST for the preparation of a possible European R&I Partnership on Forests and Forestry for a 7-year period, launched during the 2nd Strategic Plan of Horizon Europe in 2025-2028.**

info@eufore.eu | eufore.eu

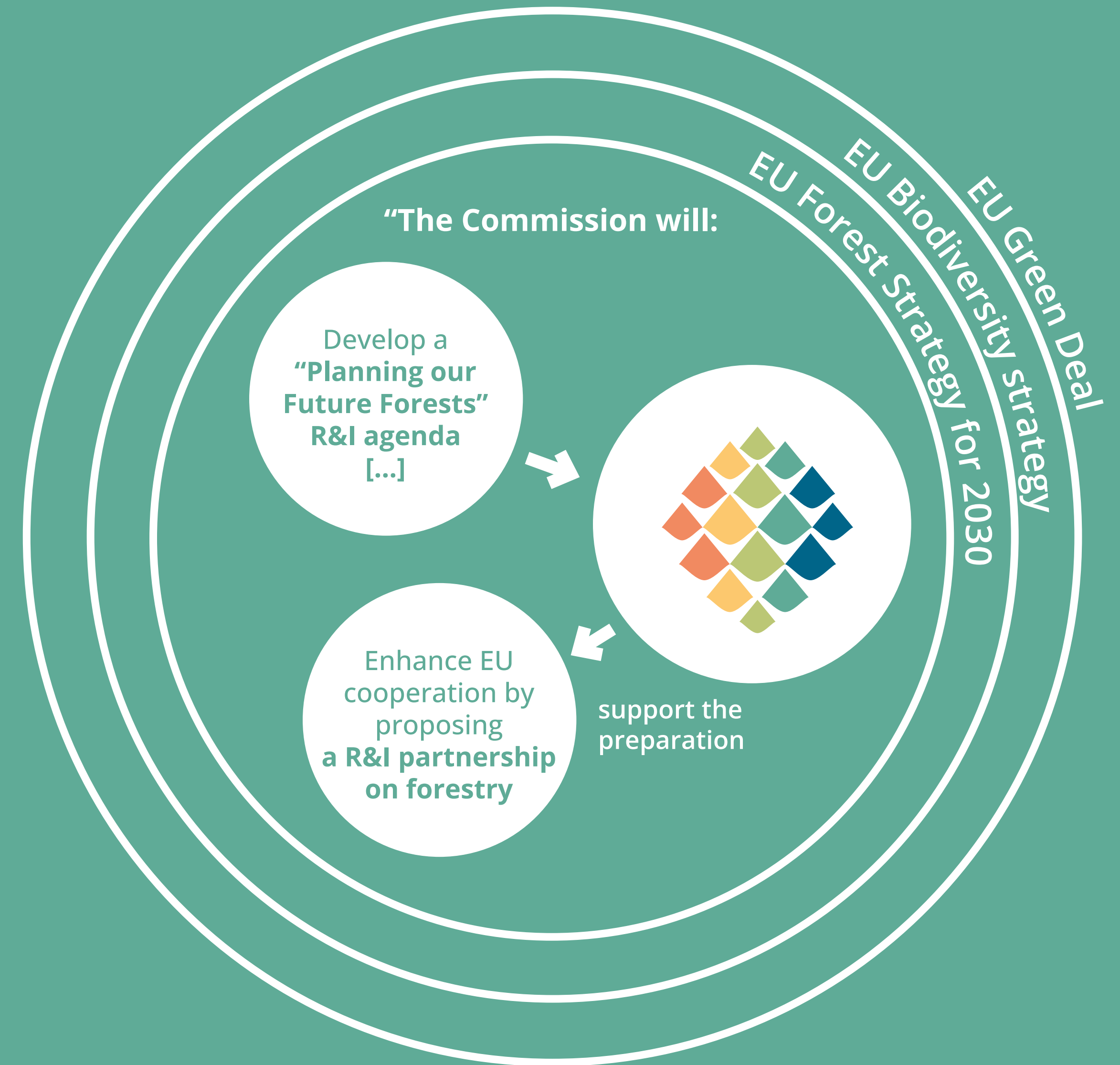


How does EUFORE contribute to the EU Agenda?

Within the EU Green Deal and EU Biodiversity Strategy, [the new EU Forest strategy for 2030](#) has a **twofold objective**:

- Support the **socio-economic functions of forests** for thriving rural areas and boost forest-based bio-economy within sustainability boundaries
- Protect, restore and enlarge EU's forests **to combat climate change, reverse biodiversity loss and ensure resilient and multifunctional forest ecosystems.**

EUFORE's efforts will support the implementation of this strategy.



Expected impacts

- Increased coordination of R&I funding in the sector
- Improved sector's open innovation ecosystem
- Responsive sectoral management and benefits sharing
- More sustainable forest management

Do you want to get involved and contribute to the Stakeholder Engagement hub?

Help us to set the direction for forestry research and innovation in the future!

We aim to co-design with stakeholders **what the sector's R&I priorities are**, and to work on building a financial framework for its implementation.

Why get involved?

- Learn more about the current state of the forest sector, and what societal expectations towards forests are
- Discover **how socio-economic, climatic, policy and environmentally related issues and trends** will affect forests in the future
- **Ensure your voice is heard** and contribute to future priorities

If you would like to get involved, [please fill in our short survey.](#)

info@eufore.eu | eufore.eu





EUFORE

European Forest Research and Innovation Ecosystem



Keep up to date with EUFORE news!

Subscribe to the EUFORE newsletter here and follow us in social media!

- eufore.eu
- 🇪🇺 [EC information page](#)
- ✉ info@eufore.eu
- 🐦 [@eufore_project](#)

Coordinator
European Forest Institute

Funded by the European Union. Views and opinions expressed are however those of the author(s) only and do not necessarily reflect those of the European Union. Neither the European Union nor the granting authority can be held responsible for them.



Funded by
the European Union